

INTRODUCTION

Versatile & Cost Effective

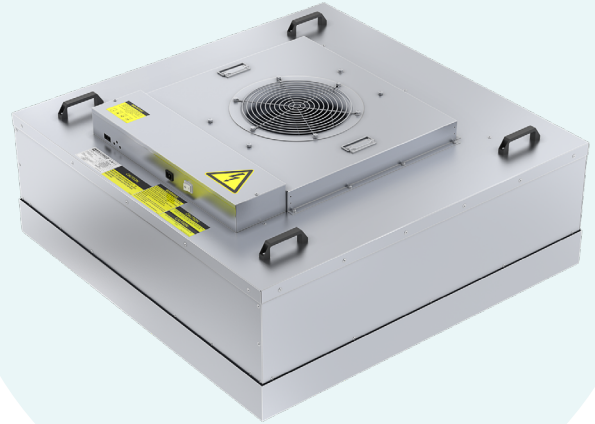
The MAC 10® LEDX 4x4 is a versatile fan filter unit that is designed for the most challenging cleanroom applications. The MAC 10® LEDX 4x4 offers significant cost savings and electrical efficiencies for large cleanrooms and comes standard with the topper design filter with the unit housing. Roomside replaceable filters and motor/blower are available on request.

Typical Applications

The MAC 10® LEDX 4x4 FFUs are primarily used in critical environments requiring clean air solutions. These include cleanrooms, pharmaceutical compounding, semiconductor and microelectronic manufacturing, and healthcare facilities.

MAC 10® LEDX 4x4 Fan Filter Introduction

The 4x4 FFU maximizes energy efficiencies with an exclusive backward-inclined blower wheel design to help in all installations. With use of the MAC 10® LEDX 4x4 unit, additional savings can be captured due to lower grid requirements and fewer electrical connections. In addition to the cost effectiveness, this model continues to provide a lower comparative sound level than most 2x4 fan filter units.



Housing Style

The MAC10 LEDX is offered with standard topper design with filter & motor assembly being replaced from above the ceiling.

Standard Features

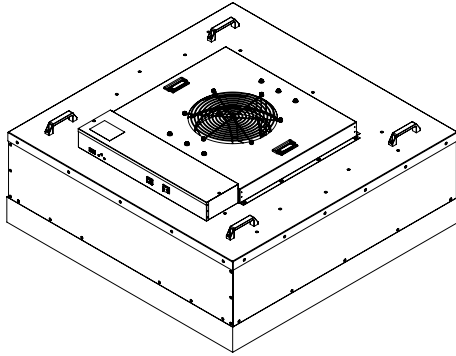
- Universal Control Card
 - Network speed control, MODBUS RTU
 - Manual speed control, on-board potentiometer
 - Analog speed control, remote 0-10V
- Electronically Commutated (EC) brushless motor, Constant Speed Program
- HEPA(H14): 99.99% efficiency @ MPPS
- 1.0 in. wg (250 Pa) of external static capability
- Backward-inclined centrifugal fan
- Mill finished aluminum exterior
- Walkable plenum (excluding prefilter), rated to 110 kg.
- Finger guard
- CE certified on 220-240V 50/60Hz units
- Manufactured to IEST recommended practices

Optional Features

- Powder coat white steel painted, Galvalume or stainless steel housing (filter not included)
- Filter Efficiencies: U15, U16, U17
- Continuous filter pressure monitoring through network
- 1" Insulation optional Sides
- Manual Speed Controller, 0-10V

PRODUCT DATA SHEET

DIMENSIONS & PERFORMANCE



Topper Design

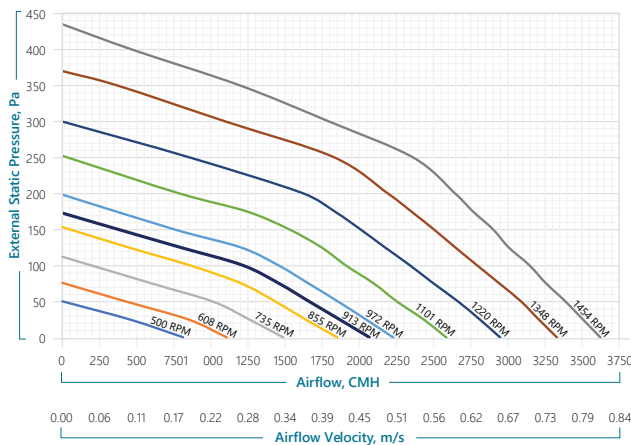
Notes:

Performance tested in accordance with the ANSI/AMCA 210-07, IEST, test standards for Certified Aerodynamic Performance Rating.

1. Sound Power Level tested as per AMCA300.
2. Max. External Static Pressure is measured with HEPA H14 Filter Installed.
3. Power Consumption is measured with H14 Filter Installed without External Static Pressure.

Grid size	mm	1200 X 1200	
Length	mm	1140	
Width	mm	1140	
Height	mm	475	
Material		Aluminium untreated	
Weight	Kg	60	
EC-Motor (IP44)			
Voltage / Phase	V / ph	220 - 240/1	
Frequency	Hz	50 / 60	
Nominal current	A	2.2	
Nominal power	W	500	
Speed max.	RPM	1500	
Operation temp. min. / max.	°C	-25°C to +40°C	
Air velocity	m/s	0.30	0.45
Air volume flow	CMH	1330	2000
Differential pressure	Pa	80	85
Power consumption ³	W	115	140
Sound power level ¹	dB(A)	54	57
Max. External Static Pressure ²	Pa	340	280

External Static Pressure Vs Airflow



Power Consumption Vs Airflow

